

<b>Name:</b>	<b>Lovastatin Methyl Ester</b> (Lovastatin Related Compound 5)
<b>Lot#:</b>	GR-15-075
<b>Test Date:</b>	11/07/2024 (re-test date: 11/07/2029)
<b>CAS No.:</b>	NA
<b>MF:</b>	C <sub>25</sub> H <sub>40</sub> O <sub>6</sub>
<b>MW:</b>	436.58
<b>Appearance:</b>	Colorless thick oil
<b>Purity:</b>	97.8% by HPLC (average of two sample preparations)
<b><sup>1</sup>H-NMR:</b>	Conforms
<b>MS-ESI (+)</b>	Conforms (shows peak at m/z = 437.28 [M+H] <sup>+</sup> )
<b>Storage</b>	Long term store at -20°C in a dry place away from direct sunlight

Approved by:

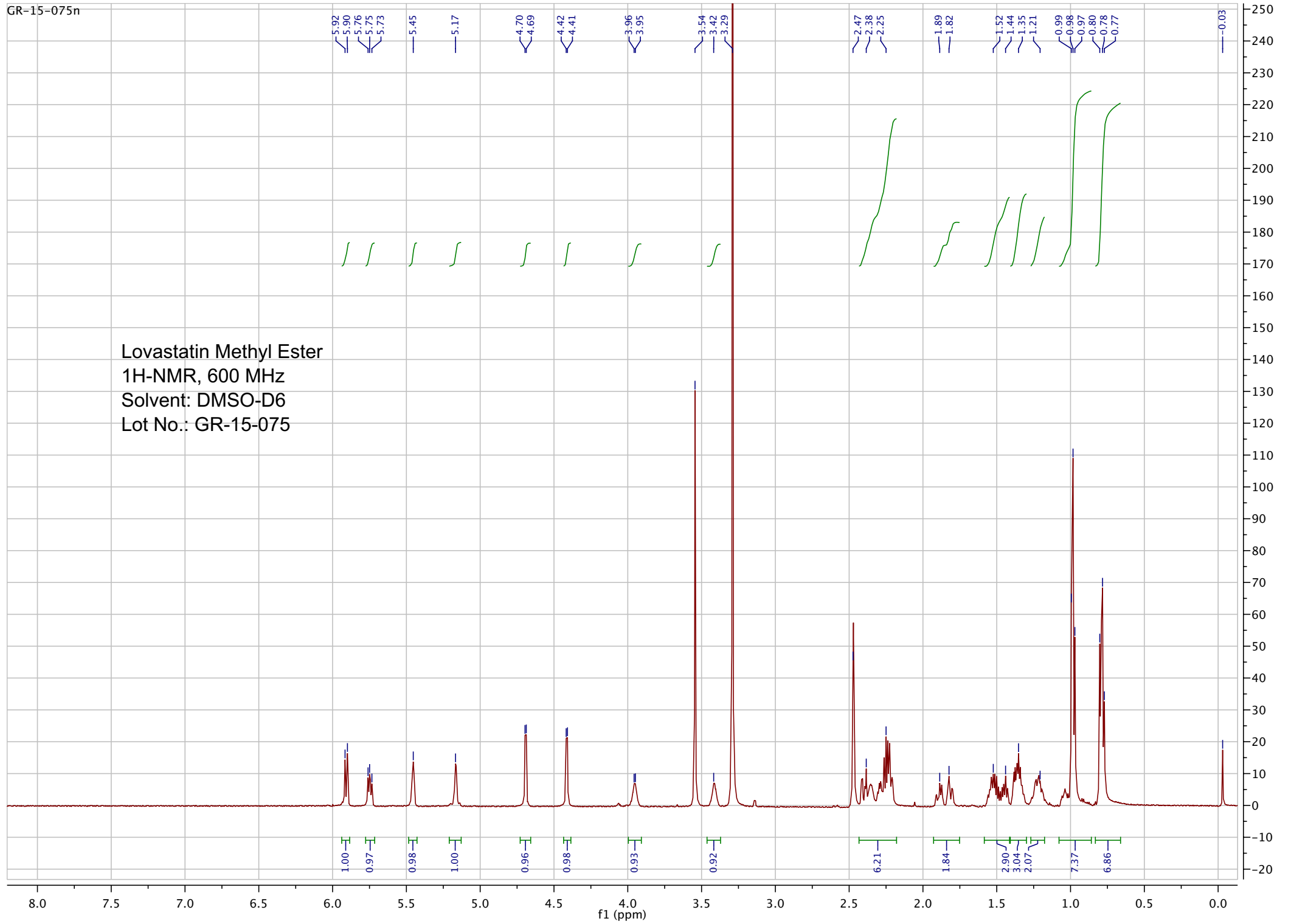
Date: 11/07/2024



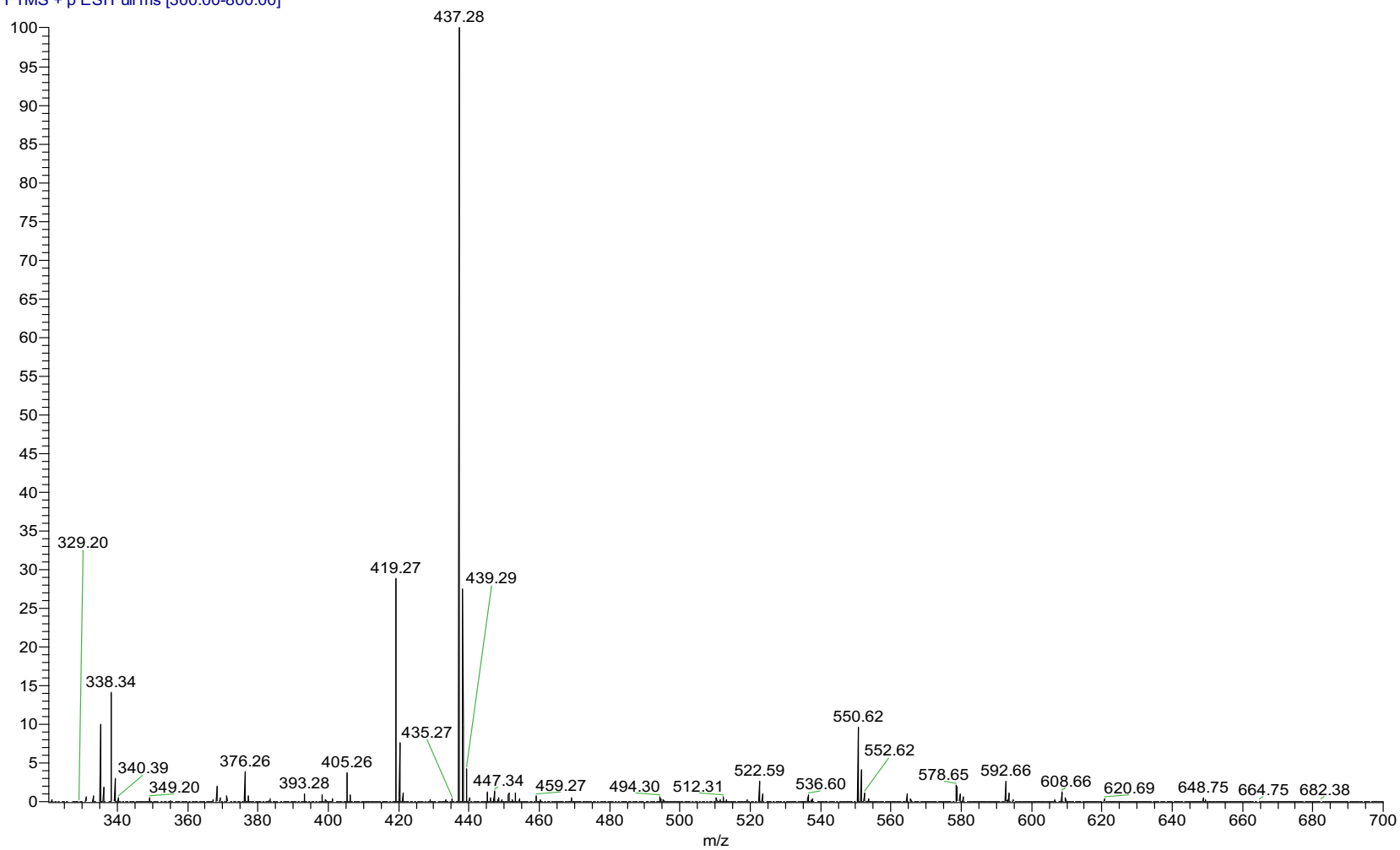
Viorica Rusu, QC/QA Manager

GR-15-075n

Lovastatin Methyl Ester  
1H-NMR, 600 MHz  
Solvent: DMSO-D6  
Lot No.: GR-15-075



pp\_2020\_023\_002 #1205-1220 RT: 5.02-5.08 AV: 16 SB: 21 3.93-4. 6.86E6  
T: FTMS + p ESI Full ms [300.00-800.00]

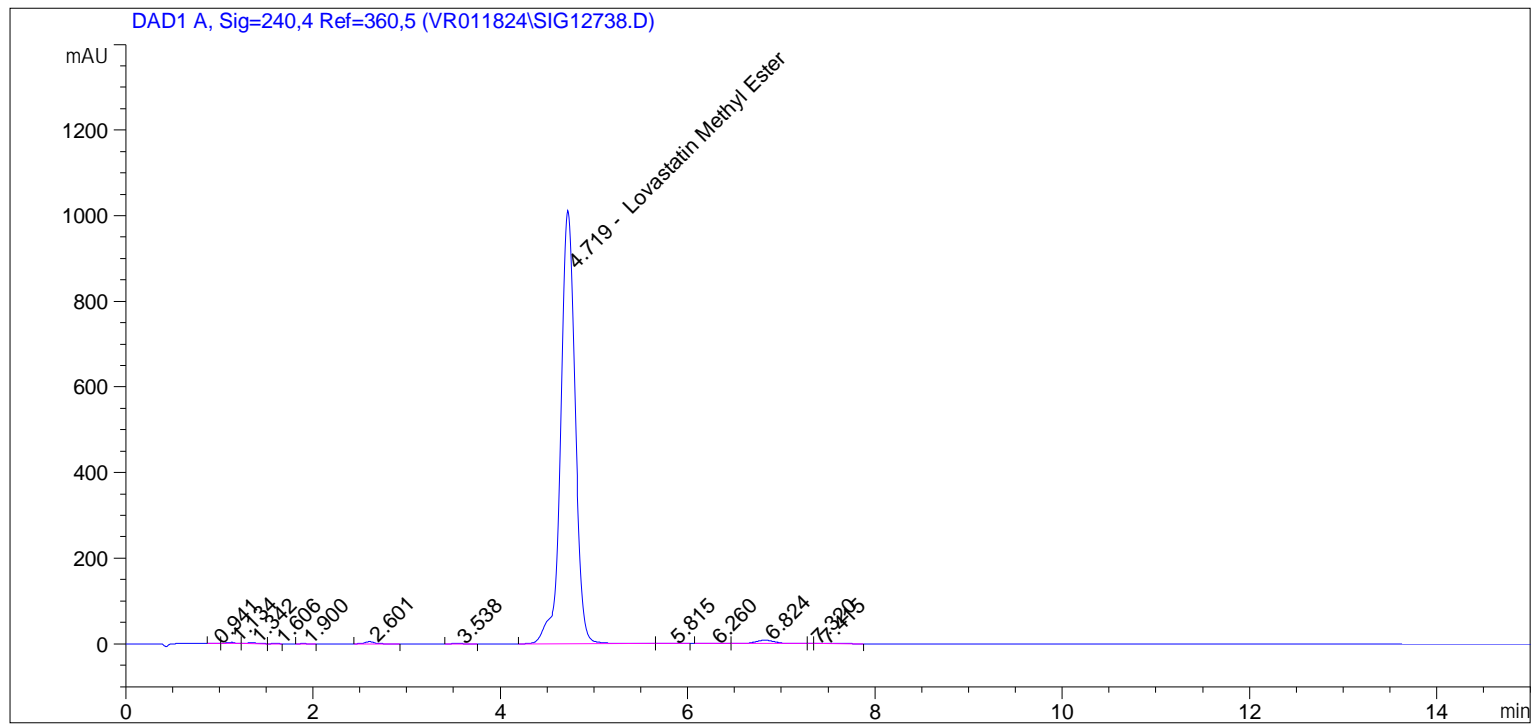


ESI-MS spectrum for sample GR-15-075. Shows monoisotopic  $[M+H]^+$  mass. I was able to subtract out most of the sodium adduct.

```

=====
Acq. Operator   : vrusu
Acq. Instrument : Instrument 1                Location : Vial 4
Injection Date  : 11/7/2024 11:39:31 AM
                                           Inj Volume : 10.0 µl

Acq. Method     : C:\CHEM32\1\METHODS\VR110724_075.M
Last changed    : 11/7/2024 11:38:24 AM by vrusu
Analysis Method : C:\CHEM32\1\METHODS\VR110724_075PM.M
Last changed    : 11/7/2024 1:29:17 PM by vrusu
  
```



Area Percent Report

```

Sorted By           :      Signal
Calib. Data Modified :      11/7/2024 1:28:26 PM
Multiplier:         :      1.603e3
Dilution:           :      1.0000
Use Multiplier & Dilution Factor with ISTDs
  
```

Signal 1: DAD1 A, Sig=240,4 Ref=360,5

Peak #	RetTime [min]	Type	Width [min]	Area [mAU*s]	Area %	Name
1	0.941	BV	0.0635	3.63229	0.0330	?
2	1.134	VV	0.0830	17.89071	0.1623	?
3	1.342	VB	0.1046	15.10639	0.1371	?
4	1.606	BB	0.0727	9.94791e-1	9.026e-3	?
5	1.900	BB	0.0724	7.45487e-1	6.764e-3	?
6	2.601	BB	0.0984	30.97566	0.2810	?
7	3.538	BB	0.1075	2.32855	0.0211	?
8	4.719	BV	0.1647	1.08131e4	98.1067	Lovastatin Methyl Ester
9	5.815	VB	0.1658	6.10859	0.0554	?
10	6.260	BB	0.1414	2.21551	0.0201	?
11	6.824	BV	0.2260	120.16354	1.0902	?

Sample Name: GR-15-075 spl-2

Peak #	RetTime [min]	Type	Width [min]	Area [mAU*s]	Area %	Name
12	7.320	VV	0.0562	1.73135	0.0157	?
13	7.415	VH	0.1884	6.78273	0.0615	?

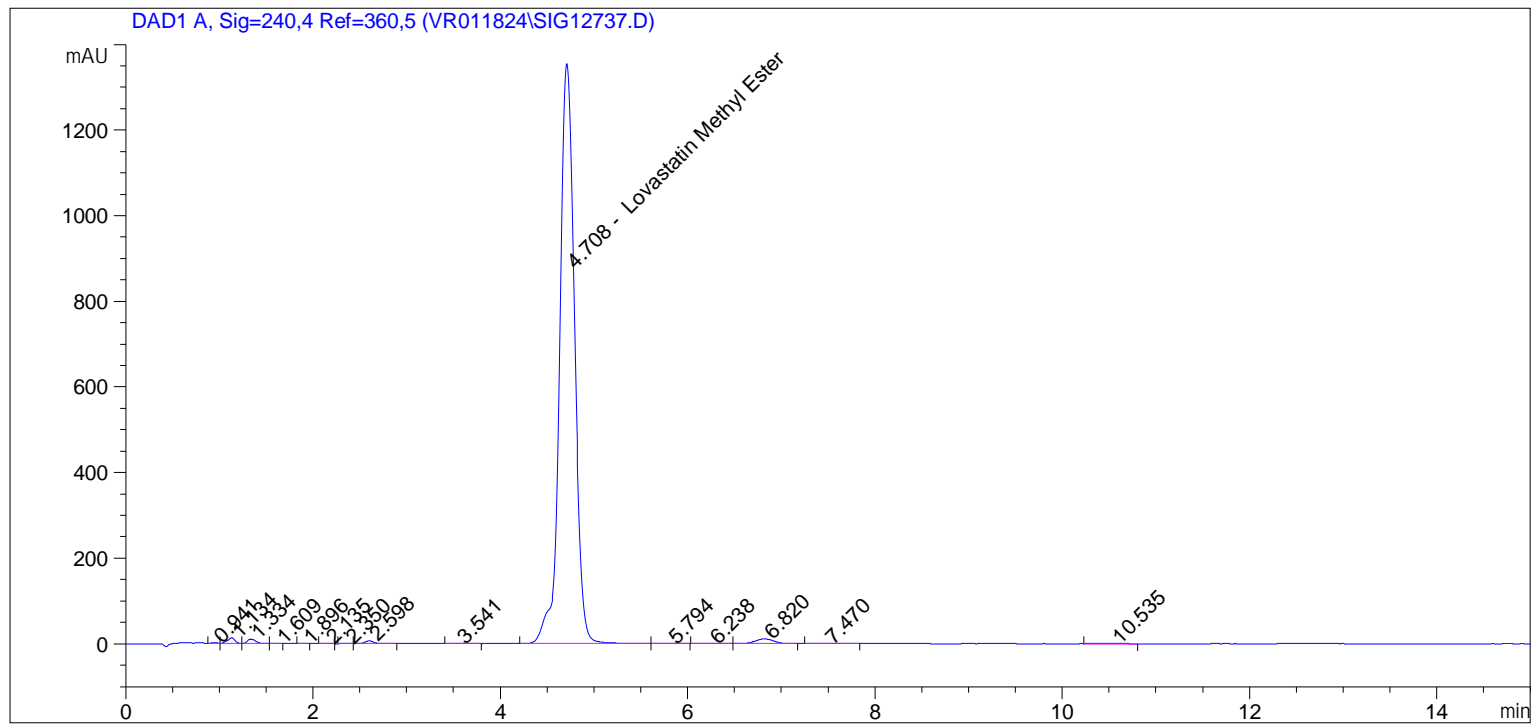
Totals : 1.10218e4

=====  
\*\*\* End of Report \*\*\*

```

=====
Acq. Operator   : vrusu
Acq. Instrument : Instrument 1                Location : Vial 3
Injection Date  : 11/7/2024 11:20:53 AM
                                           Inj Volume : 10.0 µl

Acq. Method     : C:\CHEM32\1\METHODS\VR110724_075.M
Last changed    : 11/7/2024 11:17:42 AM by vrusu
Analysis Method  : C:\CHEM32\1\METHODS\VR110724_075PM.M
Last changed    : 11/7/2024 1:29:17 PM by vrusu
  
```



Area Percent Report

```

Sorted By           : Signal
Calib. Data Modified : 11/7/2024 1:28:26 PM
Multiplier          : 1.603e3
Dilution            : 1.0000
Use Multiplier & Dilution Factor with ISTDs
  
```

Signal 1: DAD1 A, Sig=240,4 Ref=360,5

Peak #	RetTime [min]	Type	Width [min]	Area [mAU*s]	Area %	Name
1	0.941	BV	0.0610	7.63299	0.0500	?
2	1.134	VV	0.0769	73.17259	0.4796	?
3	1.334	VB	0.1014	63.83872	0.4184	?
4	1.609	BB	0.0595	2.92530	0.0192	?
5	1.896	BB	0.0636	8.22926e-1	5.393e-3	?
6	2.135	BB	0.0702	9.55963e-1	6.265e-3	?
7	2.350	BV	0.0723	7.34905e-1	4.816e-3	?
8	2.598	VB	0.0968	41.46156	0.2717	?
9	3.541	BB	0.1122	3.20959	0.0210	?
10	4.708	BV	0.1701	1.48780e4	97.5085	Lovastatin Methyl Ester
11	5.794	VB	0.1651	14.83485	0.0972	?

Sample Name: GR-15-075

Peak #	RetTime [min]	Type	Width [min]	Area [mAU*s]	Area %	Name
12	6.238	BB	0.1691	7.80554	0.0512	?
13	6.820	BV	0.2144	150.47948	0.9862	?
14	7.470	BB	0.2004	7.90968	0.0518	?
15	10.535	HB	0.2366	4.37231	0.0287	?

Totals : 1.52581e4

=====  
\*\*\* End of Report \*\*\*