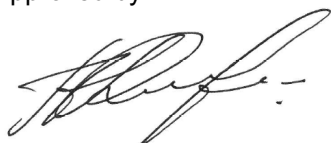


Name:	20α-Dihydrodydrogesterone-D7 (major)
Lot#:	GR-19-215a
Test Date:	01/17/2025 (re-test date: 01/17/2030)
CAS No.:	4243-74-7 (unlabeled)
MF:	C ₂₁ H ₂₃ D ₇ O ₂
MW:	321.51
Appearance:	Off-white solid
Purity:	99.7% by HPLC (average of two sample preparations); >98% atom D
¹H-NMR:	Conforms
MS-ESI (+)	Conforms (shows peak at m/z = 322.28 [M+H ⁺] ⁺)
Storage	Store at -18°C in a dry place away from direct sunlight

Approved by:

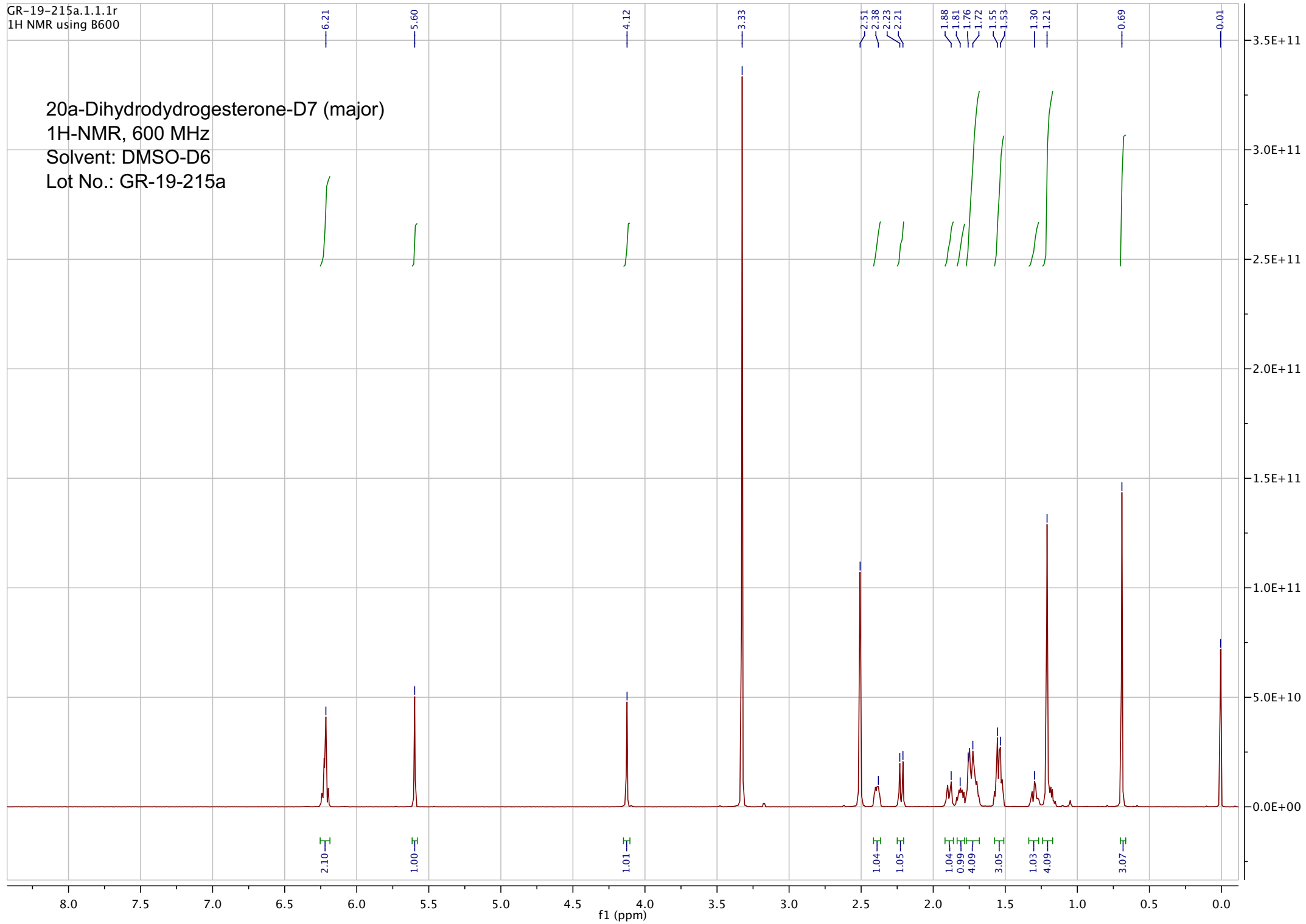
Date: 02/04/2025



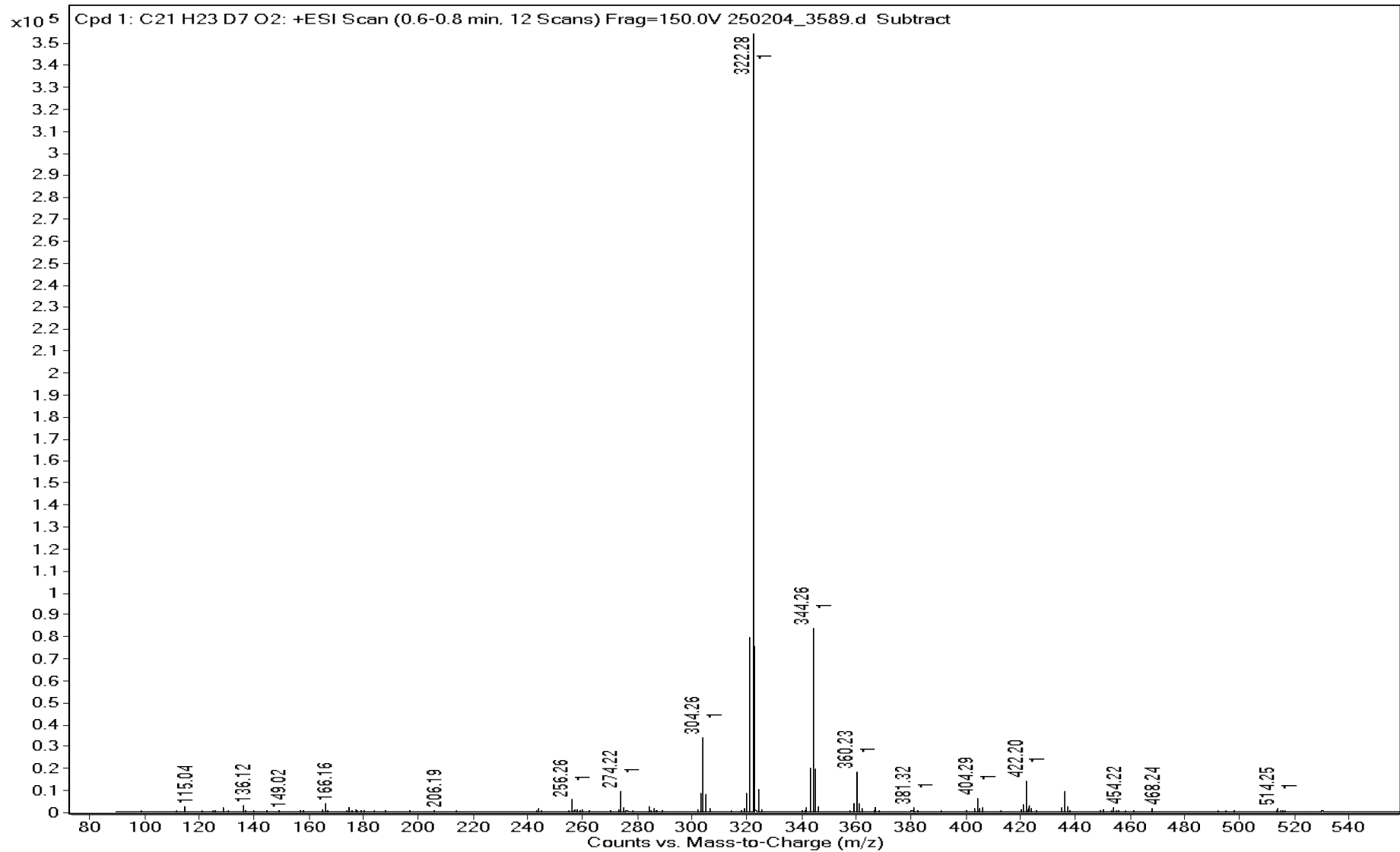
Viorica Rusu, QC/QA Manager

GR-19-215a.1.1.1r
1H NMR using B600

20a-Dihydrodydrogesterone-D7 (major)
1H-NMR, 600 MHz
Solvent: DMSO-D6
Lot No.: GR-19-215a



Sample Name	Unavailable	Data File	250204_3589.d	Acq Method	
DA Method	AIMS_Accurate_Mass.m	Instrument	Unavailable	Acq Date, Time	Unavailable
Comment	Sample information is unavailable				



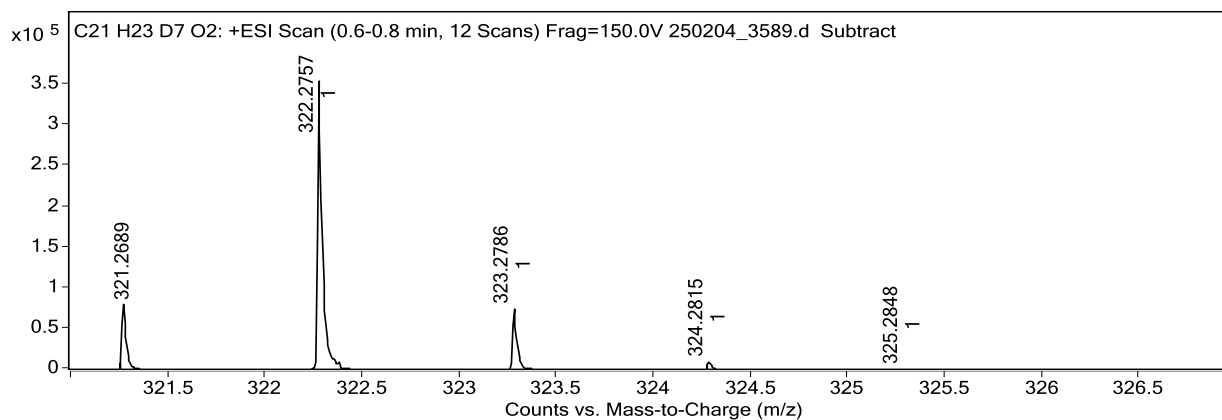
Sample Name Unavailable	Data File 250204_3589.d
Acq Method Unavailable	DA Method AIMS_Accurate_Mass.m
Instrument Unavailable	Acq Date, Time Unavailable
Comment Sample information is unavailable	

Target Ion Species

Ion Species	m/z	Ionic Formula
(M+H) ⁺	322.2757	C ₂₁ H ₂₄ D ₇ O ₂

MFG Calculator Results

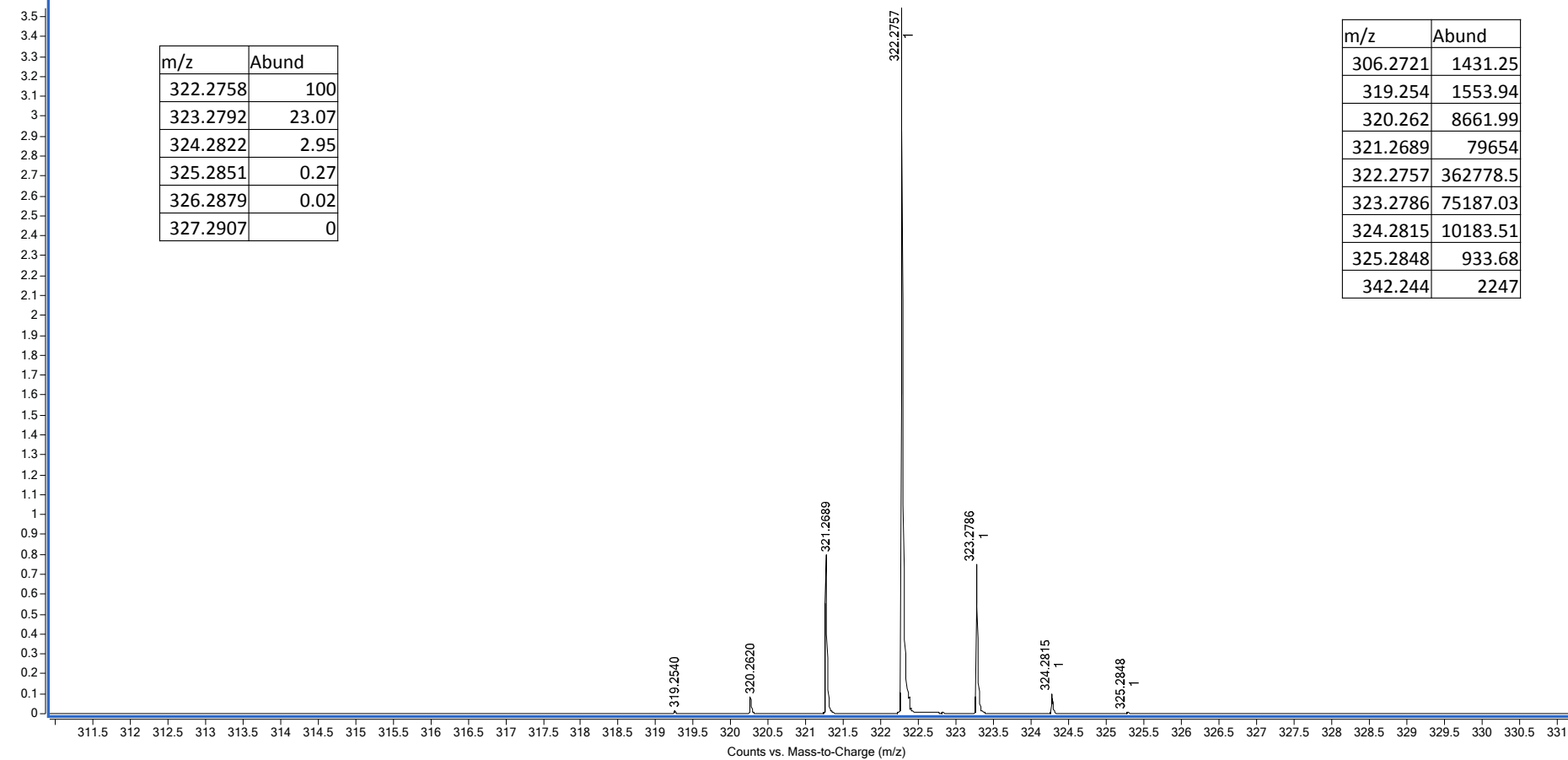
Target m/z	Ionic Formula	Calc m/z	+/- (mDa)	+/- (ppm)	DBE	MFG Score
322.2757	C ₁₉ H ₂₄ D ₆ N ₃ O	322.2760	-0.3	-0.9	7.0	99.10
322.2757	C ₁₇ H ₂₄ D ₅ N ₆	322.2762	-0.5	-1.6	7.0	98.89
322.2757	C ₂₁ H ₂₄ D ₇ O ₂	322.2758	-0.1	-0.3	7.0	98.39
322.2757	C ₁₆ H ₂₈ D ₅ N ₂ O ₄	322.2749	0.8	2.5	2.0	96.94
322.2757	C ₁₄ H ₂₈ D ₄ N ₅ O ₃	322.2751	0.6	1.9	2.0	96.10
322.2757	C ₁₂ H ₂₈ D ₃ N ₈ O ₂	322.2753	0.4	1.2	2.0	94.03
322.2757	C ₂₀ H ₃₆ N O ₂	322.2741	1.6	5.0	4.0	92.11
322.2757	C ₁₆ H ₃₂ D ₃ N ₂ O ₄	322.2780	-2.3	-7.1	1.0	83.68
322.2757	C ₁₇ H ₂₀ D ₇ N ₆	322.2731	2.6	8.1	8.0	82.13
322.2757	C ₁₄ H ₃₂ D ₂ N ₅ O ₃	322.2782	-2.5	-7.8	1.0	81.00



Predicted Isotope Match Table

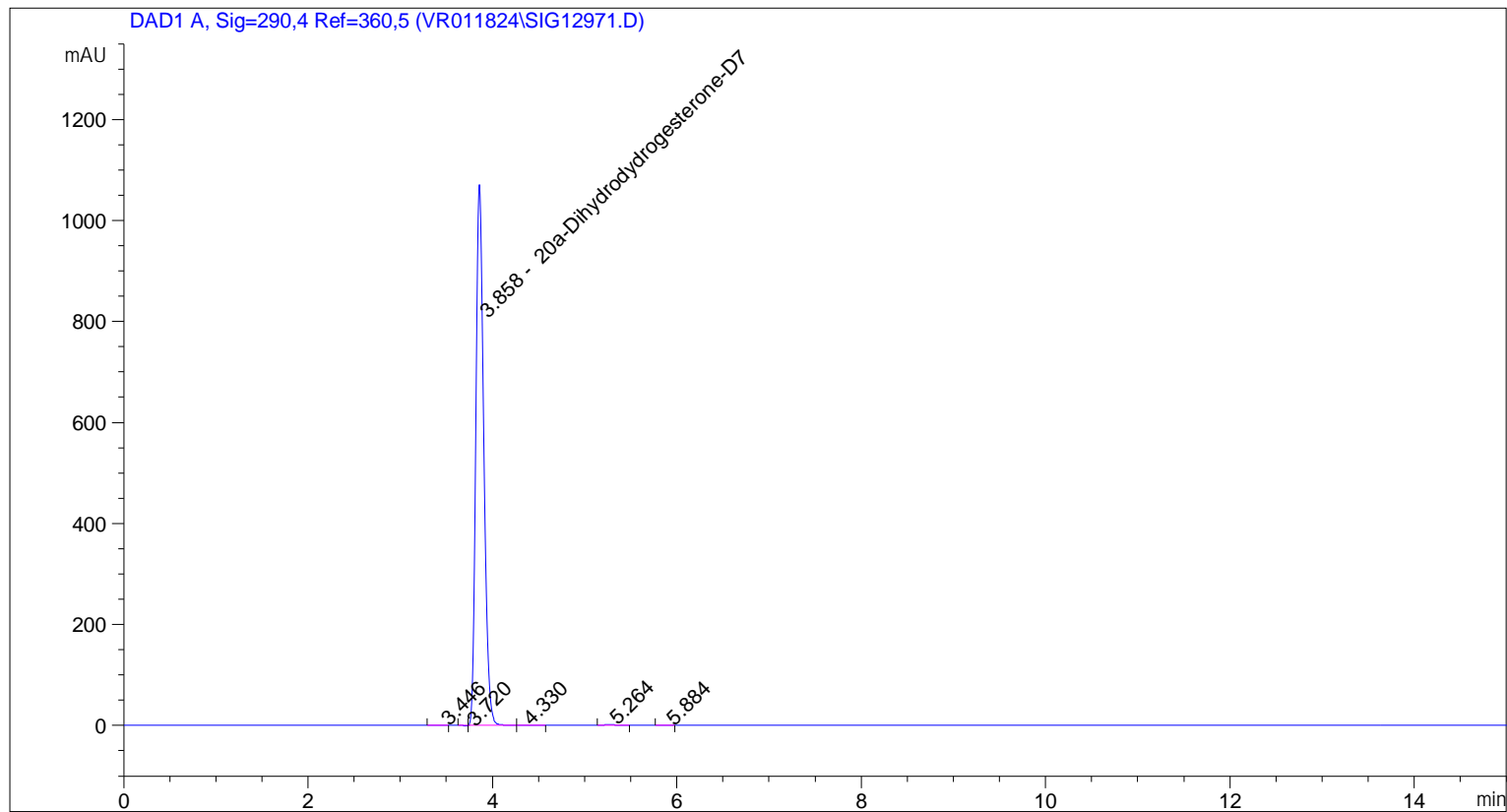
Isotope	m/z	Calc m/z	Diff (mDa)	Abund (%)	Calc Abund (%)	+/-
1	322.2757	322.2758	-0.1	100.0	100.0	0.0
2	323.2786	323.2792	-0.6	20.7	23.1	2.4
3	324.2815	324.2822	-0.7	2.8	2.9	0.1

Cpd 1: C21 H23 D7 O2: +ESI Scan (0.6-0.8 min, 12 Scans) Frag=150.0V 250204_3589.d Subtract



```

=====
Acq. Operator   :
Acq. Instrument : Instrument 1                Location : Vial 54
Injection Date  : 1/17/2025 10:16:02 AM
                                           Inj Volume : 5.0 µl
Acq. Method    : C:\CHEM32\1\METHODS\VR011725_215A.M
Last changed   : 1/17/2025 10:14:59 AM
Analysis Method : C:\CHEM32\1\METHODS\VR011725_215APM.M
Last changed   : 1/17/2025 2:15:16 PM
  
```



=====
 Area Percent Report
 =====

```

Sorted By      :      Signal
Calib. Data Modified :      1/17/2025 2:15:04 PM
Multiplier:    :      1.0000
Dilution:     :      1.0000
Use Multiplier & Dilution Factor with ISTDs
  
```

Signal 1: DAD1 A, Sig=290,4 Ref=360,5

Peak #	RetTime [min]	Type	Width [min]	Area [mAU*s]	Area %	Name
1	3.446	BH	0.0902	2.35463	0.0375	?
2	3.720	PP N	0.0428	1.38455	0.0220	?
3	3.858	PH	0.0901	6254.61963	99.5911	20a-Dihydrodydrogesterone-D7
4	4.330	HH	0.1428	5.67222	0.0903	?
5	5.264	HH	0.1094	14.52236	0.2312	?
6	5.884	HP	0.1171	1.74891	0.0278	?

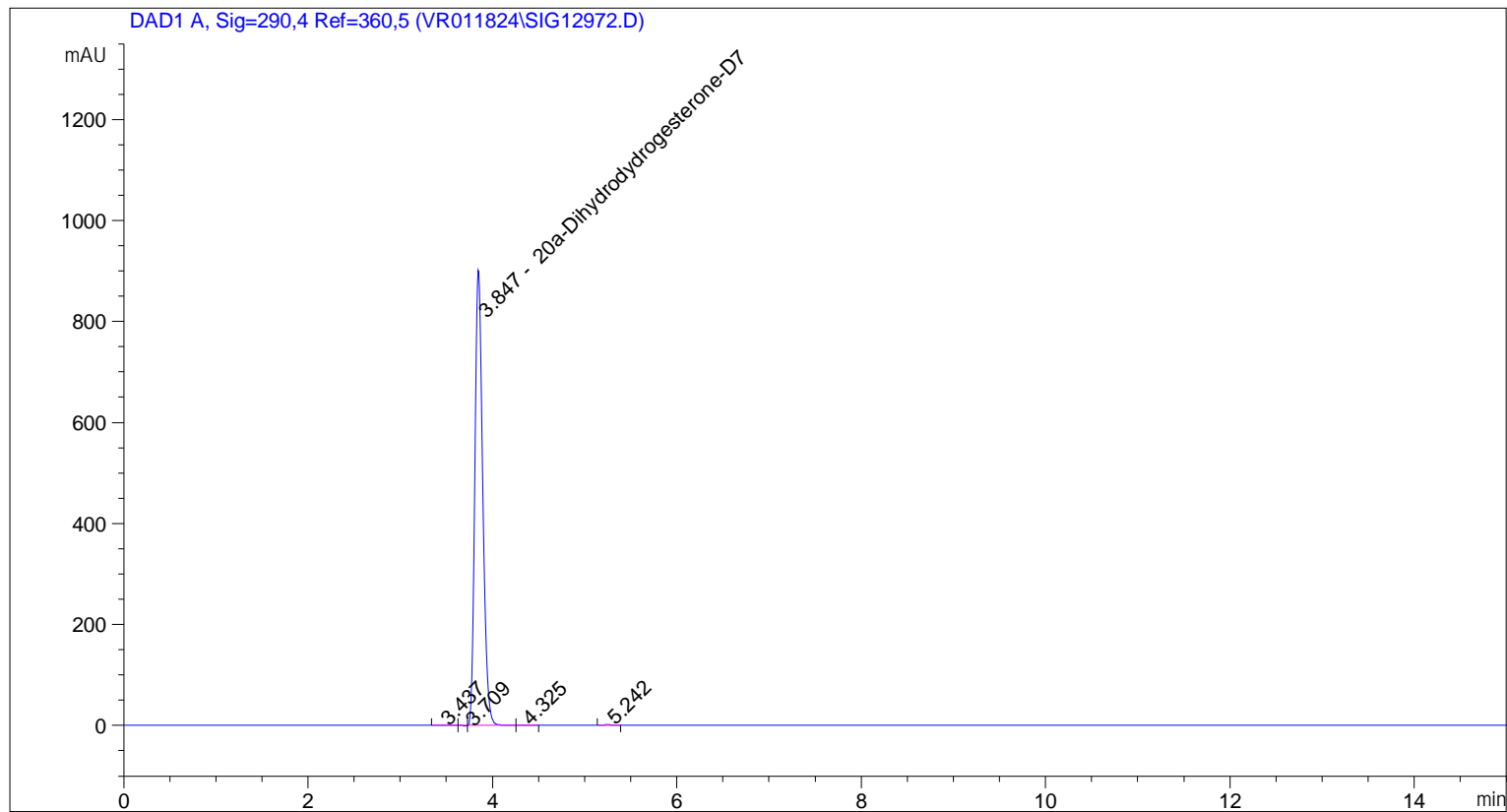
Totals : 6280.30231

=====

*** End of Report ***

```

=====
Acq. Operator   :
Acq. Instrument : Instrument 1                Location : Vial 55
Injection Date  : 1/17/2025 10:33:14 AM
                                           Inj Volume : 5.0 µl
Acq. Method     : C:\CHEM32\1\METHODS\VR011725_215A.M
Last changed    : 1/17/2025 10:32:17 AM
Analysis Method  : C:\CHEM32\1\METHODS\VR011725_215APM.M
Last changed    : 1/17/2025 2:15:16 PM
  
```



=====
 Area Percent Report
 =====

```

Sorted By           :      Signal
Calib. Data Modified :      1/17/2025 2:15:04 PM
Multiplier:         :      1.0000
Dilution:           :      1.0000
Use Multiplier & Dilution Factor with ISTDs
  
```

Signal 1: DAD1 A, Sig=290,4 Ref=360,5

Peak #	RetTime [min]	Type	Width [min]	Area [mAU*s]	Area %	Name
1	3.437	VP	0.0872	2.22835	0.0425	?
2	3.709	PP N	0.0468	1.40162	0.0267	?
3	3.847	PH	0.0896	5230.49512	99.6857	20a-Dihydrodydrogesterone-D7
4	4.325	HH	0.1345	4.07195	0.0776	?
5	5.242	HP	0.0957	8.78974	0.1675	?

Totals : 5246.98678

=====

*** End of Report ***